

A002D/CFA003型自动抓棉机

MODEL A002D & CFA003

AUTOMATIC BALE PLUCKER

概述/Summary

A002D、CFA003是开清机组的第一道工序，适用于抓取各种等级的原棉以及76mm以下的纤维。
Type A002D and CFA003 are the first process in blowroom line, which are apply to pluck bales of various classes cotton, man-made fibre below 76cm.

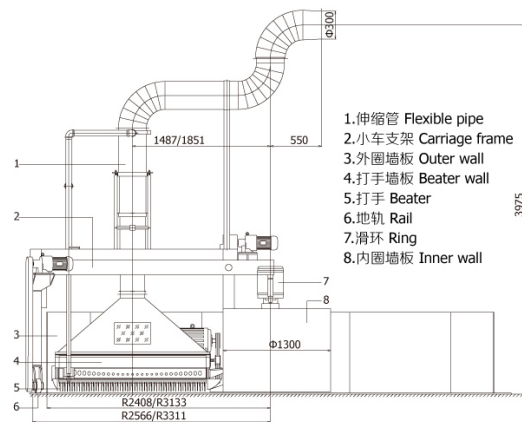


主要特点/Main Feature

A002D和CFA003均采用锯齿刀片打手，自里向外刀片由稀到密，A002D和CFA003分为三组，使抓取的纤维束更为小而均匀，有利于后道工序的混合、除杂。

A002D and CFA003 are both furnished with sawtooth disc rollers. From inside to outside discs of A002D and CFA003 are divided in three groups, groups from wide to close so that the cotton could be plucked uniformly in smaller tufts. It is favourable for next process to blend and clean.

平面图/Plane Diagram



- 1.伸缩管 Flexible pipe
- 2.小车支架 Carriage frame
- 3.外圈墙板 Outer wall
- 4.打手墙板 Beater wall
- 5.打手 Beater
- 6.地轨 Rail
- 7.滑环 Ring
- 8.内圈墙板 Inner wall

主要技术参数/Main Technical Parameters

型号 Model	A002D	CFA003
产量 Output(kg/h)	800	1000
堆放棉包重量 Loading capacity(kg)	4000(2台并联)	3500
打手转速 Speed of beater(r/min)	720	720/871
小车回转速度 Speed of carriage(r/min)	1.66 2.39	1.16 1.667
刀片伸出肋条距离 Blade extension from grid(mm)	2.5~7.5	2.5~7.5
功率 Power(kW)	4.1	5.55
地轨直径 Dimeter of rail(mm)	5132	6622
总高度 Height(mm)	4125	4125
机器净重 Net weight(kg)	约(about)1600	约(about)2500

CFA009系列往复抓棉机

SERIES CFA009 RECIPROCATING

BALE PLUCKER

产品用途/Application

本机作为开清机组的第一道工序，适用于抓取各种不同等级的原棉和76mm以下的化学纤维及粘胶纤维。装有打手的抓棉臂可上下移动和自动进行180°回转运动；抓棉臂随塔身作往复运动，在棉包上进行精细抓取，被抓取的小棉束经输棉管道被气流输送到下一开清棉设备作进一步加工处理。

CFA009 series bale plucker as the first process of blowroom & card is suitable to each kind of cotton and chemical, viscose fibre length less than 76mm. The pluck arm, mounted with two beaters can lift and revolve 180 degrees. The pluck arm moved to and back to pluck fibre above bale. The fibre plucked are sucked into the front feeder by air current through transport duct for further process.



主要特点/Main Feature

两个抓棉打手，无论抓棉小车向前或向后运动，总有一个抓棉打手是顺向抓棉，而另一个则是逆向抓棉。由电机驱动的打手悬挂装置将逆向抓棉的打手抬高，抬高的高度可根据需要进行调节，防止该打手抓棉深度过大，使两个打手在工作时的负荷基本相当，减少皮带、轴承等机件的磨损。上、下浮动的双锯片打手抓取的棉束大小均匀，离散度小，以实现清梳联工艺一开始就将棉块抓细、抓小、抓匀的要求。抓棉臂间隙下降量可在0.1~19.9mm/次的范围内进行无级调节；抓棉小车工作时的行走速度为5~15m/min变频调速。

For two plucker beaters, no matter plucker carrier moves either forward or backward, one plucker beater always plucks in clockwise, but another plucks in anticlockwise. Beater hanging device driven by motor rises up anticlockwise plucking beater. The height can be adjusted according to requirements in order to prevent beater more plucking in depth and keep the load of two beaters basic equal in working to reduce abrasion of spare parts such as belt and bearings etc. Dual saw-blade beater plucks flock evenly up and down with high and small dispersion rate in order to achieve plucking block finely, little and evenly from beginning in blowing-carding line technology. Intermittent vertical stroke of detacher can be adjuster steplessly within the range of 0.1~19.9mm/times. The travel speed of plucker carrier is adjusted by frequency inverter at 5~15m/min.

CFA24型重物分离器 MODEL CFA24 WEIGHT SEPARATOR



主要技术参数/Main Technical Parameters

型号 Model	CFA009-172	CFA009-230
产量 Output(kg/h)	1200	1500
标准长度 Standard length(mm)	23690	23690
工作高度 Working height(mm)	1700	1700
工作宽度 Working Width(mm)	1600	2180
装机总功率 Total power(kW)	9.8	10.4
外形尺寸(长×宽×高)Overall dimensions(L×W×H)(mm)	24070×5170×2900	24070×6330×2900
机器净重 Net weight(kg)	约(about)4100	约(about)4200

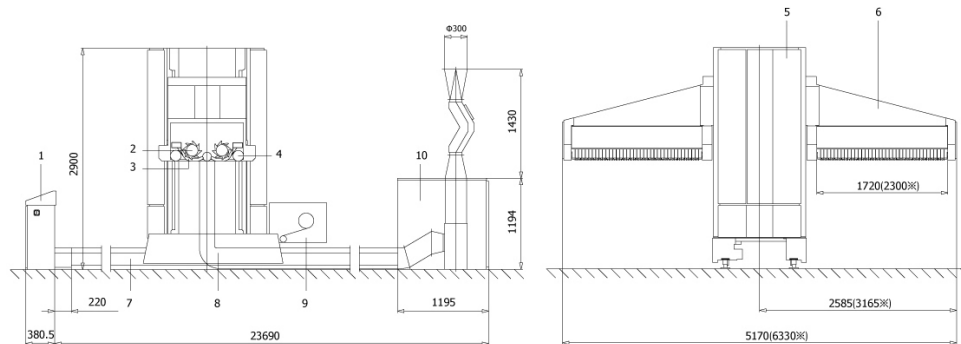
注：长度可以2475mm/节的长度递增或递减
Note: It can increase or decrease gradually in length 2475mm/knots.

主要特点/Main Feature

- 1.无动力除杂，尘棒角度可灵活调节；
 - 2.输棉风机、桥式吸铁直接安装于本机上，节省了支架和占地面积；
 - 3.本机可配置连续吸尘，杂质不需人工清理，直接通过吸尘管道排除。
- 1.Power free trash removing, easily adjustable angle of grid bar .
 - 2.Transporting fan and bridge-magnet are erected in CFA026 directly which save bracket and area occupation .
 - 3.If required, CFA026 with continuous suction system is available and need no manual clean .

平面图/Plane Diagram

平面图/Plane Diagram



- 1.电器操作台 Electric appliance operating table
 - 2.打手 Beater
 - 3.肋条 Rib
 - 4.罗拉 Turret
 - 5.转塔 Turret
 - 6.抓棉机 Bale rack
 - 7.输棉风道及地轨 Air duct and ground rail
 - 8.行走小车 Walking Carriage
 - 9.覆盖带卷绕 Cover tape wound
 - 10.出棉口 Cotton outlet
- 注：带*尺寸为CFA009-2300机型尺寸 Note: Belt * size for CFA009-2300 model size

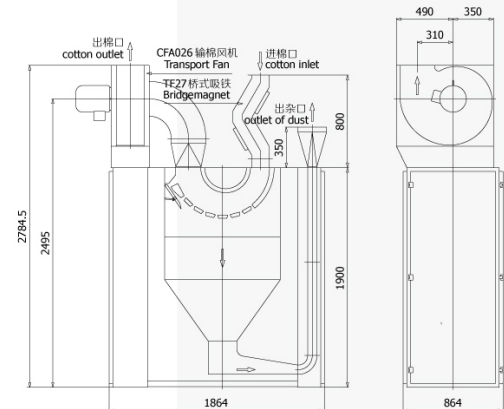
产品用途/Application

CFA24型重物分离器用以去除纤维束中大部分杂质及异物。当棉束经过桥式吸铁时，同时清除铁杂质。CFA24型重物分离器在纤维流中工作，它由装在呈圆弧形通道中的可调节尘棒组成。气流作为纤维束的载体接触到尘棒时，由于分离作用，使杂质从纤维束中松释，分离后的纤维经吸风管道输送至下一工序。

Model CFA24 weight separator is used for excluding most of trash and abnormal matter in fiber tuft. When cotton pass through bridge-magnet, iron-trash is removed at the same time. Model CFA24 weight separator, working in fiber current, is made up of adjustment duct. When cotton fiber contact grid bar, trash is separated from fiber tuft due to difference of centrifugal force then sucked away through dust pipe.

主要技术参数/Main Technical Parameters

适用纤维长度 Suitable fibre length(mm)	80mm以下纤维(It is used for fibre in length less than 88mm)
工作宽度 Working Width(mm)	500
外形尺寸(长×宽×高) Overall dimensions(L×W×H)(mm)	1864×864×2784.5
机器净重 Net weight(kg)	约(about)800



FA102A/FA102B/FA102C型单轴流开棉机 MODEL FA102A FA102B & FA102C MONO-AXIAL FLOW OPENER

产品用途/Application

FA102型单轴流开棉机适用于各种等级原棉的处理，是一台高效的预清棉设备。进入本机的原料，经排除微尘后，在自由状态下经过多次均匀、密集、柔和的弹打，得到充分开松，在开松过程中将杂质与纤维分离，杂质经尘棒排除，开松除杂质后的纤维经输棉管道送入下道工序。

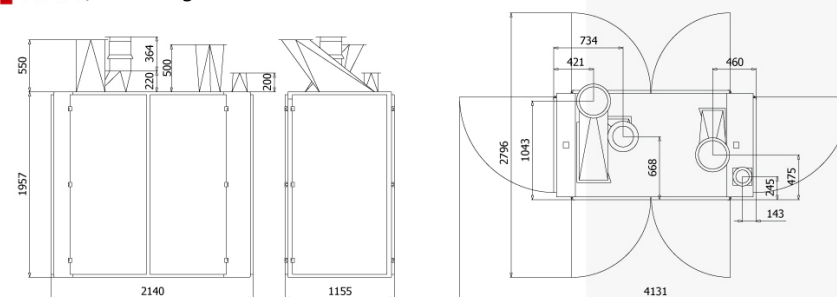
FA102 Single Roller Cleaner is an efficient pre-process cleaner, suitable for every kind of raw cotton. Material inside is opened sufficiently by flexibility beating several times in freedom after five and half circles. During opening, cotton is separated from dust. Material opened and purified is transported to next process.



主要特点/Main Feature

- 1.无握持开松，不损伤纤维；
 - 2.V形角钉富有弹性，开松柔和充分，除杂效率高；
 - 3.打手调速可通过变换皮带轮或变频实现；
 - 4.尘棒隔距可手动调节，满足不同的工艺要求；
 - 5.可供选择的间隙或连续式吸落棉装置。
 - 6.特殊设计的结构，加强了微尘和短绒的排除。
- 1.Open with free hold, decrease the fibre damage.
 - 2.V type beater, flexible and high efficient.
 - 3.Beater can be driven by pulley or inverter moter.
 - 4.Grids distance can be adjusted manually, meet the variety processing demand.
 - 5.Intermittent or continuous exhaust device is optional
 - 6.Special construction, increase removing of dust and short fibre.

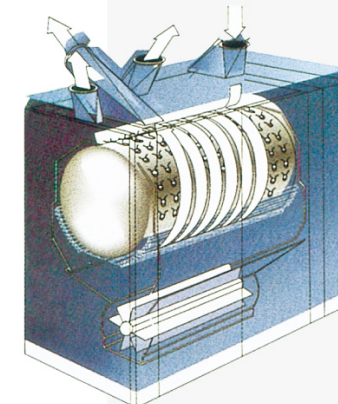
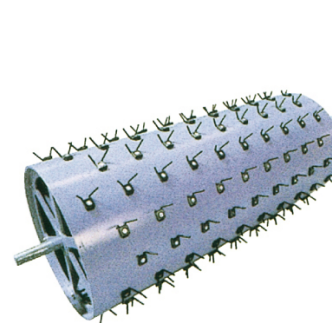
平面图/Plane diagram



主要技术参数/Main technical parameters

产量 Output(kg/h)	1000
工作宽度 Working Width(mm)	1600
角钉打手直径 Pinned beater diameter(mm)	Φ750
角钉打手 Pinned beater	皮带轮或变频调速 Control by pulley or inverter
装机总功率 Total power(kW)	8.05
外形尺寸(长×宽×高) Overall dimensions(L×W×H)(kw)	2140×1155×1960 若加管道高度为2541 Added tuft overall height 2541
机器净重 Net weight(kg)	约(about)1500

皮翼罗拉仅间隙吸落棉提供，连续吸落棉不提供。
Removeable roller is supplied when intermittent exhaust device is used and is not supplied when continuous exhaust device is used.



SFA035B(C)/A035B(C)型混开棉机 MODEL SFA035B(C) & A035B(C) MIXING OPENER

FA025/FA025A/FA025-160型多仓混棉机 MODEL FA025 FA025A & FA025-160 SERIES MULTI-MIXER

产品用途/Application

本机适用于处理各种等级的原棉或化纤。通过凝棉器的抽吸，将上道处理后的纤维喂入本机进行混和、开松和除杂，是一台高效能的混开棉机。

This machine is designed for processing various grades of cotton or man-made fibres. By the suction of a condenser, the raw material processed by the prior machine is fed to the machine for mixing, opening, removing parts of impurities. It is a mixing opener of high efficiency.

主要特点/Main Feature

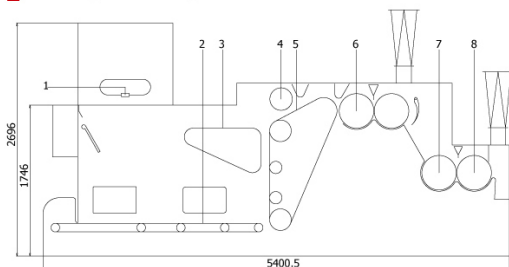
1. 本机既具有混棉作用，又有高度开松和除杂功能。除杂效率高于同类机型。
 2. 独特的尘棒调节结构，调节方便、准确、直观有效。
 3. 机型A035B(C)半封闭，机型SFA035B(C)全封闭，外观整洁美观。
- 1.The machine has not only the action of mixing but also the functions higher opening and cleaning. Its cleaning efficiency is higher than that of the machine of the same kind.
- 2.The especial grid bars device is nicety and convence.
- 3.SFA035B(C) a fully-enclosed steel plate structure is dopted for the frame with its appearance being neat and beautiful.

主要技术参数/Main technical parameters

型号 Model	SFA035B(A035B)	SFA035C(A035C)
产量 Output(kg/h)	800	
工作宽度 Working Width(mm)	1060	
打手直径 Dia. of beater(mm)	400	
打手形式 Type of beater	U型刀片、豪猪、鼻型、梳针 U-type, porcupine, nose, gill pin	
打手数量 Number of beaters	4	3
尘棒隔距 Gauge between grid bars(mm)	5~12可调(Adjustable)	
功率 Power(kW)	5.47	
外形尺寸(长×宽×高) Overall dimensions(L×W×H)(mm)	5429×1606×2746 (5400.5×1426×2696)	5048×1606×2746 (5019.5×1426×2696)
机器净重 Net weight(kg)	约(about)3000	



平面图/Plane diagram



1. 光电开关 Photo-device 2. 输棉帘 Delivery lattice 3. 压棉帘 Calender lattice
4. 均棉罗拉 Evener roller 5. 角钉帘 Spiked lattice 6. 刀片打手 Blade beater
7. 豪猪打手 Porcupine beater 8. 鼻形打手 Nose beater

产品用途/Application

本机适用于棉、化纤及其混纺的混合。原料喂入本机后，在气流作用下，被均匀地吹入各个棉仓，形成气流混和；各仓纤维层经90°转弯输送，利用其路程差获得再次混和；过量纤维被抛入混棉室，达到细致混和。

FA025 FA025A & FA025-160 are used for blending cotton, chemical fiber or blends. After fiber is fed into Mult-mixer, airflow blows it into every hopper evenly to form a airflow blending. The fiber in every hopper is conveyed in a 90 turn by the different conveyer distance. And the excessive fiber is thrown into blending room to attain fine mixture.

主要特点/Main Feature

1. 带有PLC控制系统，与前后机台联锁，同步工作；
 2. 强化的三重混和作用，实现原料的均匀混和；
 3. 棉仓压力自动检测，自动控制抓棉机开停；
 4. 输送带与角钉帘均采用交流变频电机传动，运行速度无级可调；
 5. 灵敏的光电检测装置，实现全流程连续工作。
1. Designed with PLC control system and connected with the PLC of front and back machine.
2. Intensive three times mixture, all kinds of fiber can be even blended.
3. The pressure in hopper can be automatically monitored, controlling bale plucker to start or stop.
4. Transport belt and spike lattice are controlled by motor with inverter, can be stepless speed regulation.
5. Sensitive detect section, obtaining continuous running of the whole process.

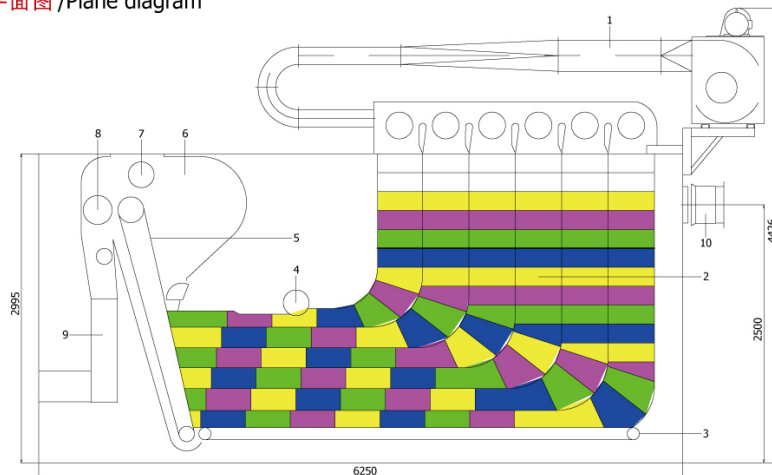


FA106系列开棉机 SERIES FA106 FINE OPENERS

主要技术参数/Main technical parameters

型号 Model	FA025	FA025A	FA025-160
产量 Output(kg/h)	800	500	900
仓数 Number of trunks	6		
工作宽度 Working Width(mm)	1200	1200	1600
输棉风机风量 Air volume of conveying fan(m ³ /h)	3100~5600		
排风管背压 Back pressure in exhaust pipe(Pa)	0~ -100		
排风口风量 Air volume at exhaust dust outlet(m ³ /h)	3000~3500		
功率 Power(kW)	8.77	13.52	10.35
外形尺寸(长×宽×高) Overall dimensions(L×W×H)(mm)	6250×1600×4426		
机器净重 Net weight(kg)	约/about 4800		

平面图/Plane diagram



1. 喂棉管道 Feeding tube
2. 直立式储棉仓 Vertical storing trunks
3. 平帘 Conveyer lattice
4. 导棉罗拉 Guiding roller
5. 斜帘 Inclined lattice
6. 混棉室 Mixing chamber
7. 均棉罗拉 Evener roller
8. 剥棉罗拉 Stripping roller
9. 储棉箱 Reserving box
10. 排尘口 Dust exhaust outlet

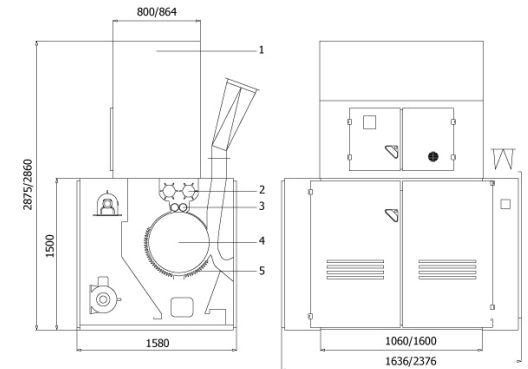


产品用途/Application

本机是开清棉设备之一，其作用是对经过初步开松的原棉及化纤作进一步的开松、分梳及除杂。

This machine is one of scutching and blowing machinery whose function is for further opening and cleaning to cotton or chemical fiber being primary opened.

平面图/Plane diagram



1. 上棉箱 Top chuter
2. 上给棉罗拉 Top feed roller
3. 下给棉罗拉 Bottom feed roller
4. 打手 Beater
5. 尘棒 Grid bar

主要特点/Main Feature

该机由上棉箱部件、给棉部件、打手部件、尘棒调节部件、机架部件组成。在清花工艺流程中与凝棉器配合使用，其打手在一定转速下通过离心力和尘棒的综合作用将尘杂分离出来，把经过充分开松除杂的原料送给下道工序，分离出来的尘杂进入滤尘系统。

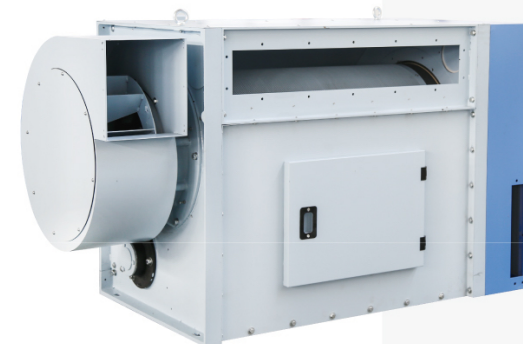
This machine is made up of top chute, feed unit, beater unit, grid bar adjusting unit, frame unit. It is used to gether with condenser in scutching process and its beater, running at certain speed, exclude trash through mutual function of centrifugal force and grid bar. Fully opened and cleaned material are sent to ilext process and trash separated are sent to dust filtering system.

主要技术参数/Main technical parameters

型号 Model	FA106	FA106A	FA106B	FA106-160
产量 Output(kg/h)	800	600	600	600
适用原料 Suitable material	76mm以下的天然和人造纤维 Natural and man-made fibre in length less than 76mm			
工作宽度 Working Width(mm)	1060	1060	1060	1600
给棉罗拉转速 Feed roller speed(r/min)	35、44、52、63 可根据产量无极调速stepless speed adjusting according to output			
打手转速 beater speed(r/min)	480、535、600 可根据产量调整皮带轮直径(可选变频) pulley diameter changeable according to output(option:inverter)			
功率 Power(kW)	3.55	3.55	3.55	5.1
外形尺寸(长×宽×高) Overall dimensions(L×W×H)(mm)	1636×1580×2875			2375×1580×2870

CFA030(Φ500)\CFA030(Φ700)型凝棉器 MODEL CFA030(Φ500)&CFA030(Φ700) CONDENSER

A045B型凝棉器 MODEL A045B CONDENSER



产品用途/Application

本机用于开清棉流程中，它是利用风机的抽吸来输送凝聚棉纤维，是A045B的替代产品。

The condenser is used in blow room line. With the aid of the suction of a fan, the cotton is conveyed and condensed. It is substitute of Model A045B condenser.

主要特点/Main Feature

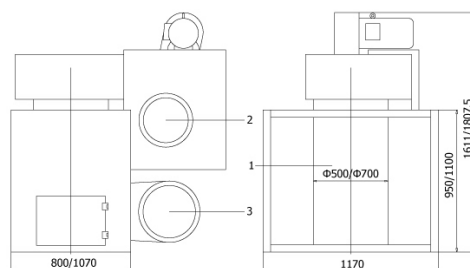
- 1.利用旋转气流的离心作用来排除棉纤维中的短绒和尘屑。
- 2.由于取消了传统凝棉器的剥棉罗拉，从根本上消除因揉搓而产生的大量束丝，提高了生条质量。

- 1.By means of the centrifugation produced by rotating air current, the short fibre and dust in the cotton are removed.
- 2.As the stripping roller in traditional condenser is cancelled, a large amount of curly cotton produced in the rubbing of stripping are thoroughly eliminated, thus upgrading the quality of card sliver.

主要技术参数/Main technical parameters

型号 Model	CFA030(Φ500)	CFA030(Φ700)
产量 Output(kg/h)	700~900	700~900
机幅 Machine width(mm)	1070	1070
尘笼直径 Dia. of dust cage(mm)	500	700
功率 Power(kW)	3	4
外形尺寸(长×宽×高) Overall dimensions(L×W×H)(mm)	1434×1170×1611	1724×1170×1807.5
机器净重 Net weight(kg)	约 about 450	约 about 600

平面图/Plane diagram



- 1.尘笼 Dust cage
- 2.进棉口 Cotton inlet
- 3.排尘口 Dust exhaust outlet

产品用途/Application

本机用于开清棉流程中，利用风机气流的抽吸来输送和凝聚棉纤维，并经尘笼排除部分尘杂和短绒，然后由剥棉罗拉剥下供应下道机台。

The machine is used blow room. With the aid of suction of a fan, the cotton is conveyed and condensed. After removing part of impurities and short fibre by the dust cage, the material is stripped off by a stripping roller to supply the next machine.

主要技术参数/Main technical parameters

型号 Model	A045B	A045B-5.5
产量 Output(kg/h)	600~800	
机幅 Machine Width(mm)	1060	
尘笼直径 Dia. of dust cage(mm)	500	
打手形式 Type of beater	六排皮翼式 6-rows leather blade	
风扇直径 Dia. of fan(mm)	500	500
排风扇风量 Fan exhaust volume(m ³ /h)	4500	6000
功率 Power(kW)	4	5.5
外形尺寸(长×宽×高) Overall dimensions(L×W×H)(mm)	1728.5×800×1000	1783.5×800×1000
机器净重 Net weight(kg)	约 about 600	

主要特点/Main Feature

本机有多种规格可供选用。根据在流程中的不同位置，可选用不同功率和型式。

There are many sorts of condenser for selecting. According to the position in blow room line, condensers with different power and type could be selected.

FA151型除微尘机 MODEL FA151 DEDUSTING MACHINE

CFA177型清梳联喂棉箱 MODEL CFA177 BLOWING-CARDING TUFT FEEDER



产品用途 / Application

本机适用于各种等级的原棉，通常用作开清棉流程中的最后一个除尘点。经充分开松的纤维，通过本机可有效地排除所含细小尘杂，这对于有气流纺纱和喷气织机的纺织厂，采用本机尤为重要，能大大降低因纤维含尘而导致的细纱断头。

The machine is suitable for processing cotton of various grades and is usually used as the last dedusting point in cleaning line. Micro dust can be removed efficiently dust if the fibre has been sufficiently opened. Application of this machine in the cleaning line is of special importance in the mills having rotor spinning and air-jet loom, since the end breakage in spinning due to dust-laden fibre can be greatly reduced.

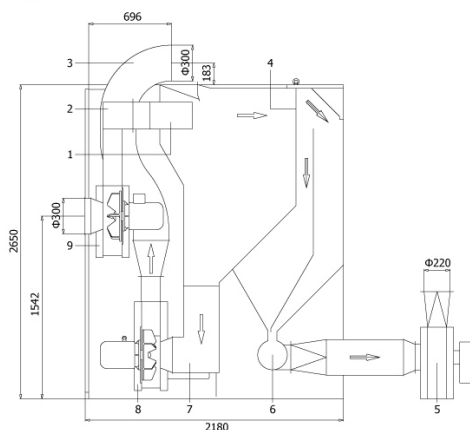
主要技术参数 / Main Technical Parameters

型号 Model	FA151
产量 Output(kg/h)	500~800
工作宽度 Working Width(mm)	1600
机内风机风量 Air volume of fan inside the machine(m³/h)	1980~3996
过滤网面积 Area of filter net(cm²)	26334
摆板的摆动次数 Swing times of paddle(time/min)	63
功率 Power(kW)	12
外形尺寸(长×宽×高) Overall dimensions(L×W×H)(mm)	2180×1860×2650
机器净重 Net weight(kg)	约(about)1800

主要特点 / Main Feature

- 1.除尘工艺独特，纤维束与网眼板碰撞后，通过气流作用完成除尘，具有不损伤纤维，除尘效率高，工艺流程配置灵活等特点。
- 2.出棉风机采用变频无级调速电机，可根据系统风压之要求设定其转速。
- 1.The way to remove dust is special. Fibre tufts collide with perforated plate and with the help of air current to remove the dust. This machine has advantages as do little harm to fibre, high efficiency and flexible process.
- 2.A frequency-inverted stepless variable motor is used for the delivery fan, the speed of which can be set according to the air pressure requirement of the system.

平面图 / Plane diagram



1. 摆板 Swing plate
2. 进棉管 Inlet pipe
3. 出棉管 Outlet pipe
4. 网眼板 Perforated plate
5. 排尘风机 Dust exhaust fan
6. 排尘管 Dust exhaust pipe
7. 输棉道 Delivery duct
8. 出棉风机 Outlet fan
9. 进棉风机 Inlet fan

产品用途 / Application

本机是清棉机与梳棉机之间的联接设备。采用上下棉箱结构，整体刚性好，精度、密封性好。在配棉总管中，设有压力传感器，保证了上棉箱内棉花密度的均匀。下棉箱采用风机通过静压扩散箱循环吹气，使整个机幅内下棉箱压力均匀。采用进口压力传感器，根据下棉箱压力来控制上棉箱给棉罗拉速度，保证了下棉箱压力更稳定。顺向喂棉、弹性握持，采用螺旋排列梳针打手，纤维损伤小。

The structured of upper and lower trunks with features of good rigid, higher precise and sealing. A pressure sensor which is installed in the main distribution duct to ensure even density in upper trunk. The circulation air coming from static-pressure expansion sade makes pressure even in lower trunk. Imported pressure sensor controls speed of feed roll in upper trunk according to pressure existed in lower trunk to ensure more stable pressure in lower trunk, carding beater arranged in spiral can reduce fibre damage.



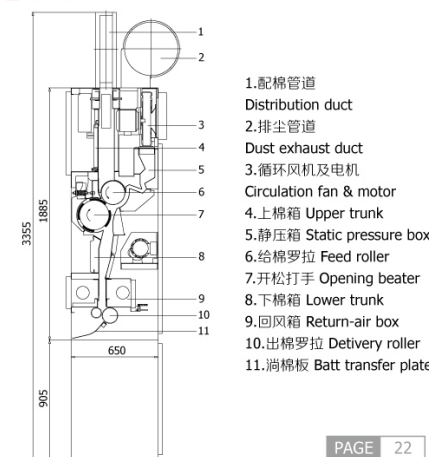
主要特点 / Main Feature

1. 罗拉采用包锯齿针布和活动给棉板进行顺向给棉，开松效果更好，纤维损伤小。
2. 给棉罗拉、打手等部位，可以方便地打开，便于清洁卫生工作以及异常情况的处理。
3. 下棉箱采用压力传感器控制，全新电子电路精确地控制下棉箱压力，确保给棉罗拉连续均匀给棉，输出棉层均匀一致。
4. 铝合金打手重量轻、光滑、振动小，运转效果好，设有螺旋和直线两种规格，适用于纺棉和化纤等不同需求。
1. Roller package serrated clothing and activities to toward to the cotton to the cotton board, better opener, small fiber damage.
2. To roller, beater and other parts can easily open, easy clean-up operations and exception handling.
3. Under cotton tank pressure sensor control, the new electronic circuit very precise control of the cotton tank under pressure to ensure continuous and uniform feed roller to cotton, cotton output layer uniform.
4. Aluminum beater light weight, smooth, vibration small, operation and effect, with two specifications of the spiral and straight, suitable for different needs, such as spinning cotton and chemical fiber.

主要技术参数 / Main Technical Parameters

型号 Model	CFA177	
单台产量 Output of each set(kg/h)	35~100	
工作宽度 Working Width(mm)	920	
给棉罗拉 Feed roller	形式 Form	锯齿
	直径 Diameter(mm)	180
开松打手 Open beater	形式 Form	六排角钉
	直径 Diameter(mm)	250
风机叶轮 Fan vane wheel	形式 Form	12叶后倾
	直径 Diameter(mm)	290
功率 Power(kW)	转速 Speed(r/min)	558. 648. 781
	转速 Speed(r/min)	2820
功率 Power(kW)	1.67	
外形尺寸(长×宽×高) Overall dimensions(L×W×H)(mm)	750×1544×2450	
机器净重 Net weight(kg)	约(about)600	

平面图 / Plane Diagram



1. 配棉管道 Distribution duct
2. 排尘管道 Dust exhaust duct
3. 循环风机及电机 Circulation fan & motor
4. 上棉箱 Upper trunk
5. 静压箱 Static pressure box
6. 给棉罗拉 Feed roller
7. 开松打手 Opening beater
8. 下棉箱 Lower trunk
9. 回风箱 Return-air box
10. 出棉罗拉 Delivery roller
11. 尚棉板 Batt transfer plate

CFA1203H型高产梳棉机 MODEL CFA1203H HIGH PRODUCTION CARDING MACHINE



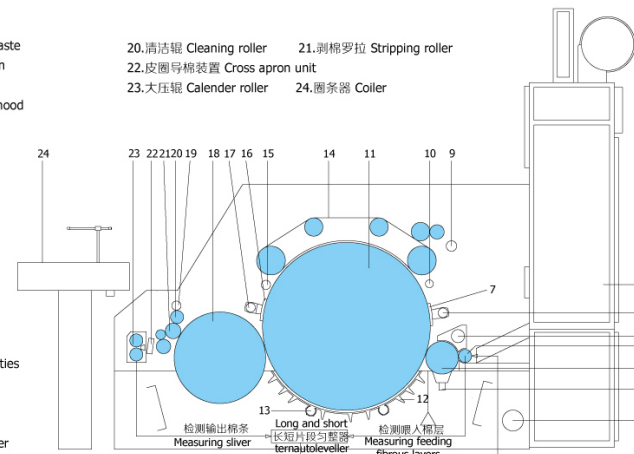
主要特点/Main Feature

1. 微机控制和工业触摸屏显示有关参数。
2. 特制的机架，强度高，易调整，便于大漏底的拆卸。
3. 封闭式圆墙板避免了墙板堵花。
4. 适应棉箱或双棉卷喂入。
5. 可视的吸塑滤尘管道，光滑流畅，多点连续吸，压力连续检测，吸尘杂效果好。
6. 盖板倒转，增强分梳，改善棉网质量。
7. 前后固定盖板、棉网清洁器及分梳板。
8. 锡林道夫结构优化设计，提高精度。
9. 全新外观设计，美观大方。
10. 前后固定盖板、棉网清洁器，采用铝型材，轻巧光洁，除杂效果好。
11. 新型皮圈导棉，免维护，操作方便。
12. 设长、短片段混合环自调匀整装置。

1. Microcomputer controls and touch screen display relative parameter.
2. The special workframe with high strength, easy to adjust and convenient to take out the under casing of the cylinder.
3. Sealed later shield of the cylinder to avoid the fly on it.
4. Suitable for chutes feed or two lap feed.
5. Visible plastic adhesive filtering pipe with smooth surface, multi suction point on card for continuous suction with good suction efficiency. Continuously pressure detection.
6. Reversed revolving flats increase carding action and improve web quality.
7. Front and post stationary flats, web cleaners and carding segment under lickel-in are fitted.
8. Optimum designed constructions of the cylinder and doffer ensure its precision.
9. Newly designed profile with beautiful appearance.
10. Front and post stationary flats and web cleaners are made of aluminum lightweight and smooth to ensure good suction efficiency.
11. New type cross apron for sliver guiding, free of maintenance, easy operation.
12. Long-term and short-mixed loop autoleveller is equipped.

平面图/Plane Diagram

1. 车肚花吸点 Suction point for under-card waste
2. 刺辊分梳板 Carding segment under licker-in
3. 刺辊 Licker-in
4. 给棉罗拉 Feed roller
5. 刺辊放气罩吸点 Suction point for licker-in hood
6. 后棉网清洁器 Post web cleaner
7. 后固定盖板 Post stationary flat
8. 棉箱 Chute feeder
9. 盖板花吸点 Suction point for flat strips
10. 盖板杂质吸点 Suction point for flat impurities
11. 锡林 Cylinder
12. 锡林封闭漏底 Enclosed undercasing for cylinder
13. 锡林漏底吸点 Suction points for cylinder undercasing
14. 盖板 Flats
15. 盖板杂质吸点 Suction point for flat impurities
16. 前固定盖板 Front stationary flat
17. 前棉网清洁器 Front web cleaner
18. 道夫 Doffer
19. 清洁辊吸点 Suction point for cleaning roller



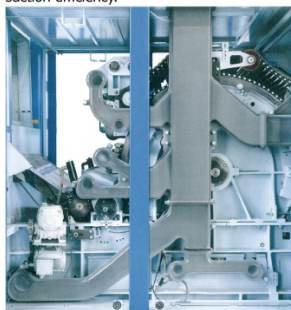
20. 清洁辊 Cleaning roller
21. 剥棉罗拉 Stripping roller
22. 皮圈导棉装置 Cross apron unit
23. 大压辊 Calender roller
24. 圈条器 Collier

主要技术参数/Main Technical Parameters

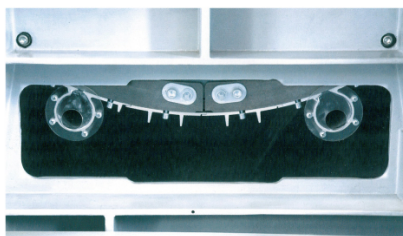
适用范围 Applications	本机适用于纤维长度22~76mm的纯棉、化纤及其混纺 This machine is used for processing cotton chemical fibres and blends in length 22~76mm	回转盖板根数(工作盖板/盖板总数) No. of revolving flats(Working/total)	32/86
产量 Output(kg/h)	最高(Max.) 80	附加梳理部件 Attached carding segments	后固定盖板4根(化纤)4~6根(棉花) 4 Rear stationary flats (cotton), 4~6(chemical fiber); 刺辊分梳板2根 2 Licker-in carding segment
出条速度 Delivery speed(m/min)	最高(Max.) 220	棉网清洁器 Web cleaner	前固定盖板4根(化纤)4~6根(棉花) 4 Front stationary flats (cotton), 4~6(chemical fiber)
棉条定量 Silver count(g/m)	3.5~6.5	适用棉条筒Can size(mm)	前棉网清洁器1个 Front web cleaner(1)
喂棉重量 Feed weight(g/m)	300~1000		后棉网清洁器1个 Rear web cleaner(1)
工作幅宽 Working Width(mm)	1000		直径(diameter)600或(or)1000
总牵伸倍数 Total draft	60~300		高度(height)1100,1200
锡林工作直径 Cylinder diameter(mm)	1288	连续吸尘 Continuous suction	吸风量(air volume)3500米³/小时(m³/h)
锡林转速 Cylinder speed(r/min)	340~467	出口静压 Air pressure	-850~-920帕(Pa)
道夫工作直径 Doffer diameter(mm)	706	压缩空气 Compressed air requirement	压力(pressure)5~7公斤/厘米²(kg/cm²)
道夫转速 Doffer speed(r/min)	8~60	空气消耗 Compressed air consumed	0.02米³/小时(m³/h)
刺辊工作直径 Licker-in diameter(mm)	250	装机总功率 Total installed power(kW)	8.99
刺辊转速 Licker-in speed(r/min)	749,825,933,1015(Φ224) 693,763,863,940(Φ242) 640,705,797,686(Φ262)	安全罩型式 Safety cover form	全封闭 Totally-enclosed structure
回转盖板速度 Flat speed(mm/min)	81~334	占地面积(长×宽) Space requirement(L×W)(mm)	3857×1980 不含圈条器(collier no included)
		机器净重 Net weight(kg)	约(about)7500
		喂入形式 Feed method	棉箱或单棉卷喂入 Feed by chute or single lap



前后固定盖板、棉网清洁器，采用铝型材，轻巧灵活，排杂效果好。
Front and post stationary flats and web cleaners is made of aluminum with lightweight and smoothness to ensure good suction efficiency.



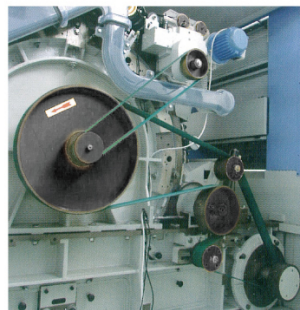
可视的吸塑除尘管道，光滑流畅，多点连续吸，压力连续检测，吸尘杂效果好。
Visible plastic adhesive filtering pipe with smooth surface, mult suction points on card for continuous suction with good suction efficiency, continuous pressure detection, good suction efficiency.



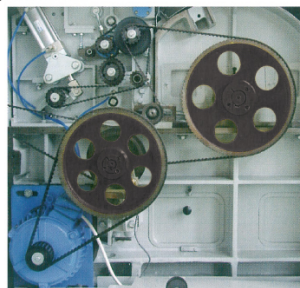
铝合金封闭式大漏底多块拼接，拆装方便。强制吸尘，外形更美观。
Aluminum alloy undercase is grouped together for easy dismantling. It is featured by coercive suction and beautiful profile.



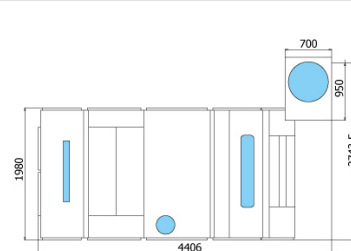
新型皮圈导棉，免维护，操作方便。
New type cross apron for sliver guiding, free of maintenance, easy operation.



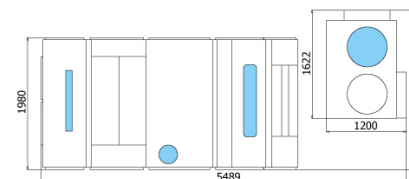
锡林、刺辊采用离心摩擦离合器及平皮带传动，结构简单，气动稳定。
Cylinder and ticker-in driven by electronic frequency converter and flat belt, featured by stable starting and simple structure.



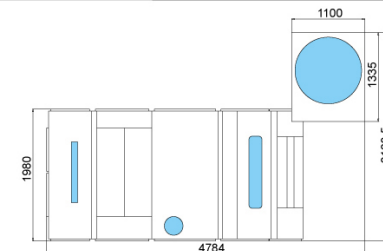
道夫采用变频电机，齿形带传动，实现了无级调速。
The doffer is driven by an electronic frequency motor and toothed belt, so as to its speed variation is stepless.



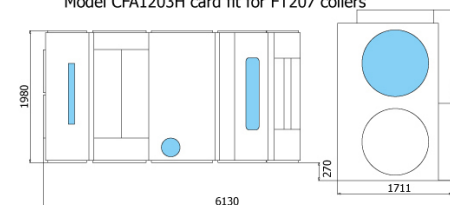
CFA1203H型梳棉机配FT207-60型圈条器
Model CFA1203H card fit for FT207-60 coilers



CFA1203H型梳棉机配FT209A-60型圈条器
Model CFA1203H card fit for FT209A-60 coilers



CFA1203H型梳棉机配FT207型圈条器
Model CFA1203H card fit for FT207 coilers

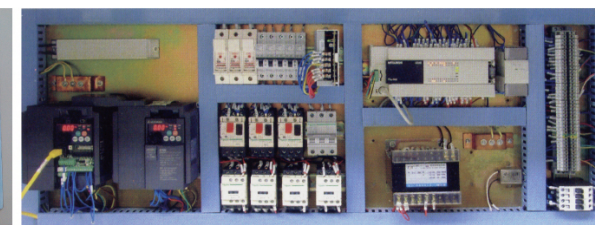


CFA1203H型梳棉机配FT209A型圈条器
Model CFA1203H card fit for FT209A coilers

配置/Fitting

自调匀整器：CYZ-306型混合环自调匀整器，通过检测眼入棉层厚度和出条厚度，由计算机控制给棉罗拉转速，实现长短片段匀整，提高棉条均匀度。

Autoleveller: model CYZ-306 autoleveller with open-and-close loop is used to detect thickness of cotton layer feed and sliver and to control feed roller speed through computer, so as to realize short and long term levelling to enhance sliver evenness.



电器控制柜/Electric control cabinet

CFA1203H型梳棉机电气控制柜，采用进口PLC和进口变频器，控制道夫和给棉电机的无级调速和比例运转。升降速平滑，运行稳定可靠，刹车性能好。机器的左前方安全罩上装有进口显示屏，能控制开停各个电机，能显示各种故障和满筒等状态作出报警。整机的控制中心是进口可编程控制器，操作简便，运行可靠。

There are imported PLC and imported inverters in the electronic control cabinet of card CFA1203H. It controls doffer and feed motor's speed to make a stepless variable-speed and run it at the ratio, with a smooth speed up and down and a good braking performance, it is running steadily and reliably. The imported display screen is erected on front safety cover in the left of machine. It can control each motor. It can display all data on dynamic technology and take an alarm for all faults and full-can status. Control center of whole machine is an imported programmable controller, which operates simply and reliably.