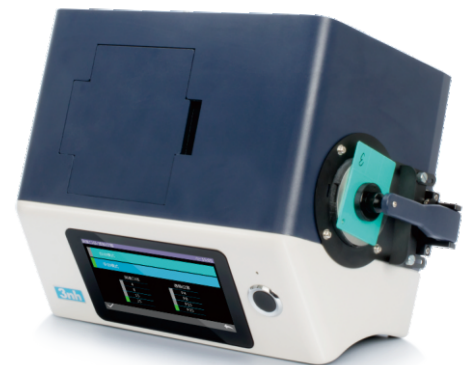


# One key to complete intelligent color measurement



## YS6060 Benchtop Grating Spectrophotometer

YS6060 is a benchtop grating spectrophotometer which is developed by 3nh independently with proprietary intellectual property. YS6060 has many features, like 7 inches TFT capacitive touch screen display, full illuminants, reflective d/8 and transmissive d/0 geometry(including or excluding UV). With very stable and precise color measurement, large storage and powerful PC software all makes YS6060 ideal for color analysis within R&D and laboratory environments.



7 inches TFT Capacitive  
Touch-screen



USB/Bluetooth 4.0



Wavelength range  
360nm – 780nm



Built-in camera  
locating

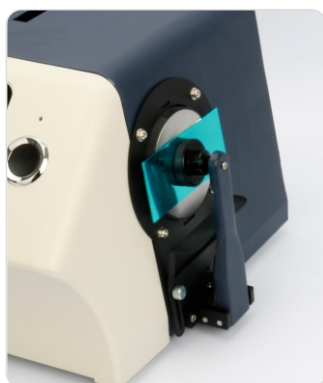


## PRODUCT FEATURES

- 1.High configuration of hardware: 7 inches TFT Color Capacitive Touch–screen Display; Concave Grating.
- 2.Double Array 256 Image Element CMOS Sensor; Long life–span stable LED, UV LED and xenon lamp.
- 3.With reflective and transmissive spectrum, accurate Lab value, good to calculate color formula and do precise color transmission.
- 4.Auto identify measuring aperture. Freely switchable between 4 measuring apertures:  $\phi$ 25.4mm/8mm/4mm. Users also can customize apertures.
- 5.Built–in temperature sensor to monitor and compensate the measuring temperature to ensure the measurement more precision.
- 6.Wavelength range 360nm – 780nm. Built–in 400nm cut off/460nm cut off (only xenon lamp edition), more professional in UV measurement.
- 7.Independent light source detector, continuously monitor the condition of light sources to ensure the light source reliable.
- 8.Multiple measurement modes: Quality Management Mode, Sample Mode; Meet more users’ requirement.
- 9.Multiple accessories, sample holders, fixation clamp, suitable to more working condition.
- 10.Big capacity data storage, for 20000 pieces test result.
- 11.Built–in camera locating.
- 12.More powerful extended functions at the PC software.

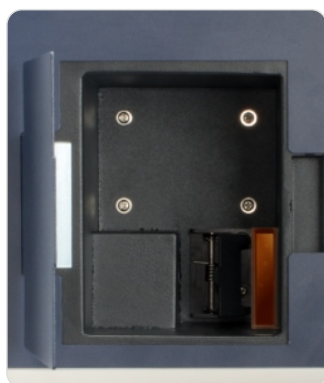


## PRODUCT HIGHLIGHTS



**Plastic Sample**

Auto–identify the apertures, 25.4/8/4mm three apertures freely switch. Special aperture can be customised.



**Transmissive Sample**

Transmittance Measurement: Adopt D/0° Geometry, conform to ISO, CIE, ASTM and DIN standard.



**Liquid, Powder, Solid Sample Measurement**



**Measuring Apertures**

Auto–identify the apertures, 25.4/15/8/4mm three apertures freely switch. Special aperture can be customised.

## APPLICATION INDUSTRY

Ys6060 benchtop spectrophotometer is designed for accurate analysis and transmission of laboratory color and appearance of solids, liquids, pastes, powders, pills, and granules in a more comprehensive, streamlined process. YS6010 is widely used in paints, inks, textiles, garments, printing and dyeing, printing etc industries for color transfer and quality control.



**Automobile**



**Leather**



**Plastics**



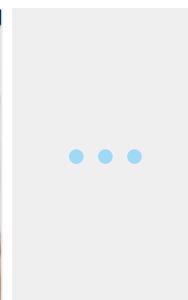
**Paint**



**Food stuff**



**Laboratory**



**Others**

## SPECIFICATION PARAMETER

### YS6060 Specification

**Optical Geometry: Reflectance:** d/8 (SCI&SCE; Include UV/Exclude UV) Transmittance: d/0 (SCI&SCE; Include UV/Exclude UV)

**Comply to standard:** CIE No.15, GB/T 3978, GB 2893, GB/T 18833, ISO7724/1, ASTM E1164, DIN5033 Teil7

**Integrating Sphere Size:**Φ154mm

**Light Source Device:**360nm-780nm Combined LED Lamp, 400nm cut-off, 420nm cut-off, UV Lamp

**Sensor:**256 Image Element Double Array CMOS Image Sensor

**Light Source Device:**360nm-780nm Combined LED Lamp, 400nm cut-off, 420nm cut-off, UV Lamp

**Wavelength Pitch:**10nm

**Semiband Width:**10nm

**Reflectance Range:**0~200%

**Measuring Aperture:**Reflective: Φ30mm/Φ25.4mm, Φ18mm/Φ15mm, Φ10mm/Φ8mm, Φ6mm/Φ4mm;Transmissive: Φ30mm/Φ25.4mm

**Specular Component:**Reflectance: SCI&SCE Transmittance: SCI&SCE

**Color Space:**CIE LAB,XYZ,Yxy,LCh,CIE LUV,Musell,s-RGB,HunterLab,βxy,DIN

**Color Difference Formula:**ΔE ab,ΔE uv,ΔE 94,ΔE cmc(2:1),ΔE cmc(1:1),ΔE 00, DINΔE99,ΔE(Hunter)

**Colorimetric Index:**WI (ASTM E313, CIE/ISO, AATCC, Hunter),YI (ASTM D1925, ASTM 313),TI (ASTM E313, CIE/ISO),MI (Metamerism Index), Staining Fastness,

Color Fastness, Color Strength, Opacity,Gardner Index, Pt-Co Index, 555 Index

**Observer Angle:**2°&10°

**Illuminants:**D65A,C,D50,D55,D75,F1,F2,F3,F4,F5,F6,F7,F8,F9,F10,F11,F12

**Displayed Data:**Spectrogram/Values, Chromaticity Values, Color Difference Values/Graph, Pass/Fail Result, Color Offset

**Measurement time:** About 2.4 s (simultaneous measurement SCI / SCE about 5 s)

<b>Repeatability</b>	Spectral reflectance:	Φ25.4mm/SCI, Standard deviation within 0.04%(400 nm to700 nm: within 0.04%)
	Chromaticity value:	Φ25.4mm/SCI, Standard deviation within ΔE*ab0.01 (When a white calibration plate is measured 30 times at 5 second intervals after white calibration)
	Spectral Transmittance:	Φ25.4mm/SCI, Standard deviation within 0.05% (400 nm to 700 nm: within 0.04%)
	Chromaticity value:	Φ25.4mm/SCI, Standard deviation within ΔE*ab 0.02 (When a white calibration plate is measured 30 times at 5 second intervals after white calibration)

**Inter-instrument Error:**Φ25.4mm/SCI Within ΔE\*ab 0.12(Average for 12 BCRA Series II color tiles)

**Size:**370X300X200mm

**Weight:**9.6kg

**Power Supply:**DC 24V, 3A Power Adapter

**Light Source Device Life:**5 years, more than 3 million times measurements.

**Screen:**7" TFT Capacitive Screen-touch Display

**Data Port:**USB & Bluetooth

**Data Storage Capacity:**Standard: 5000 Pcs; Sample: 40000 Pcs.(One PCS can include both SCI and SCE)

**Language:**English & Chinese

**Standard Accessory:**White and Black Calibration Board, Checking Green Board, Sample Holder, Φ4mm, Φ8mm, Φ15mm, Φ25.4mm Aperture,Power Adapter, USB Cable, User Guide, PC Software

**Optional Accessory:**Micro-printer, Transmissive Test Clamp Component